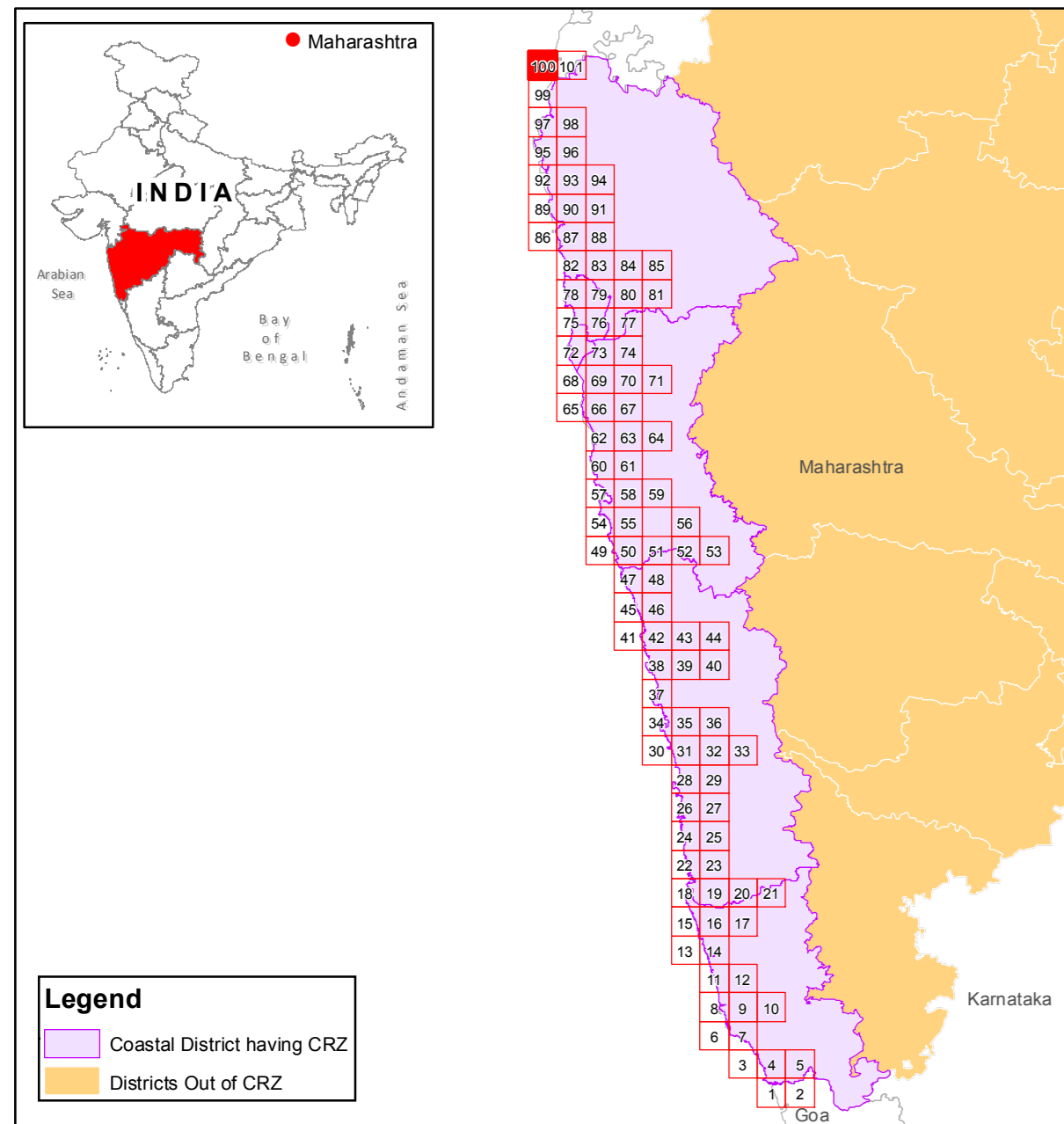
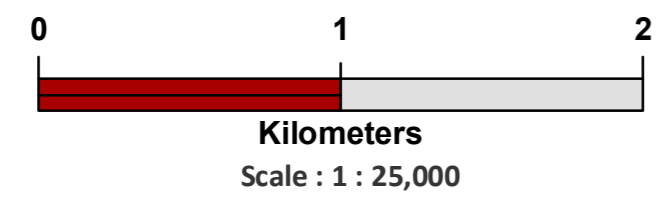


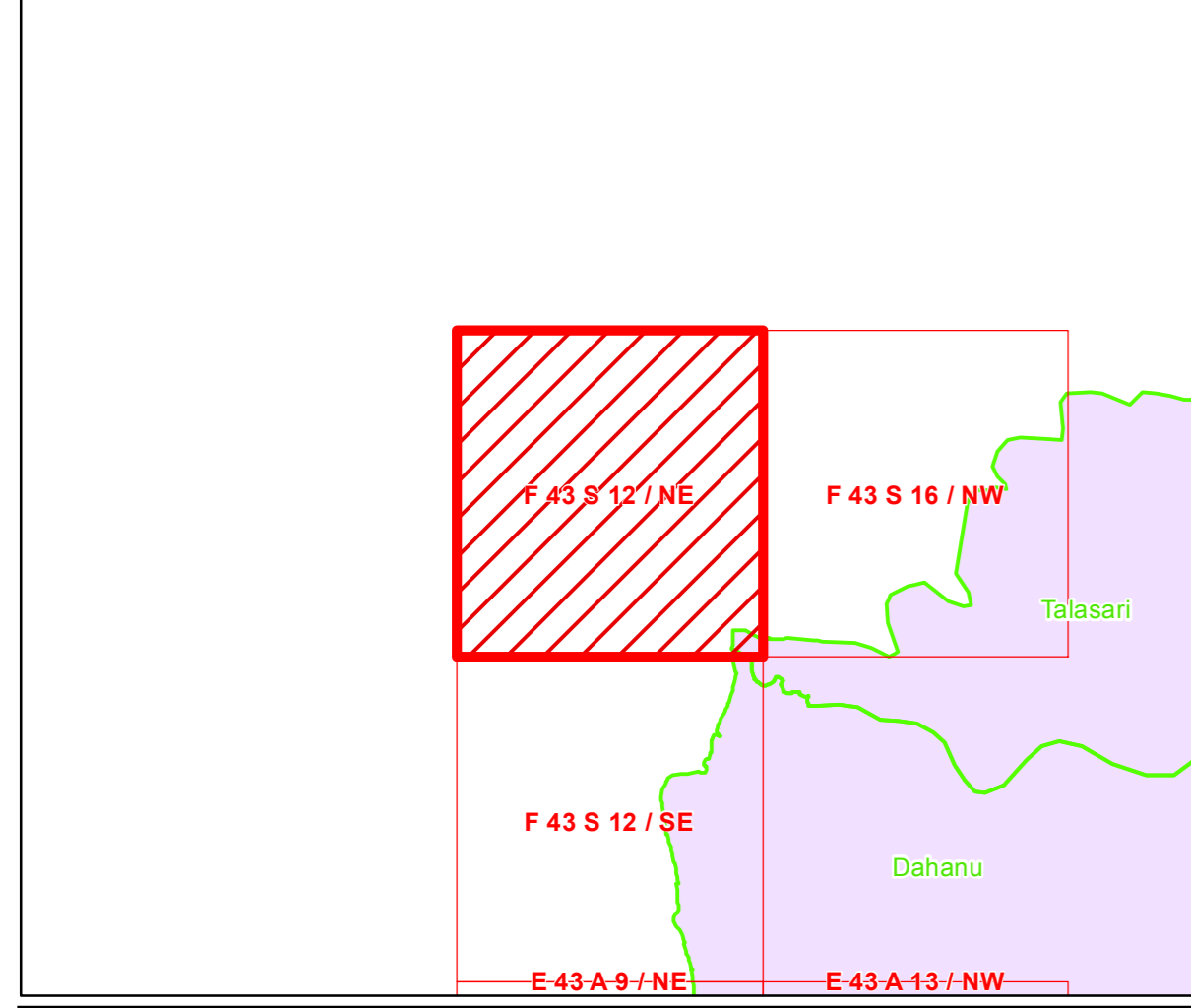
**DRAFT CZMP MAP AS PER CRZ NOTIFICATION 2019
MAHARASHTRA STATE**

SHEET NO : F 43 S 12 / NE
Projection :- UTM Datum :- WGS 1984

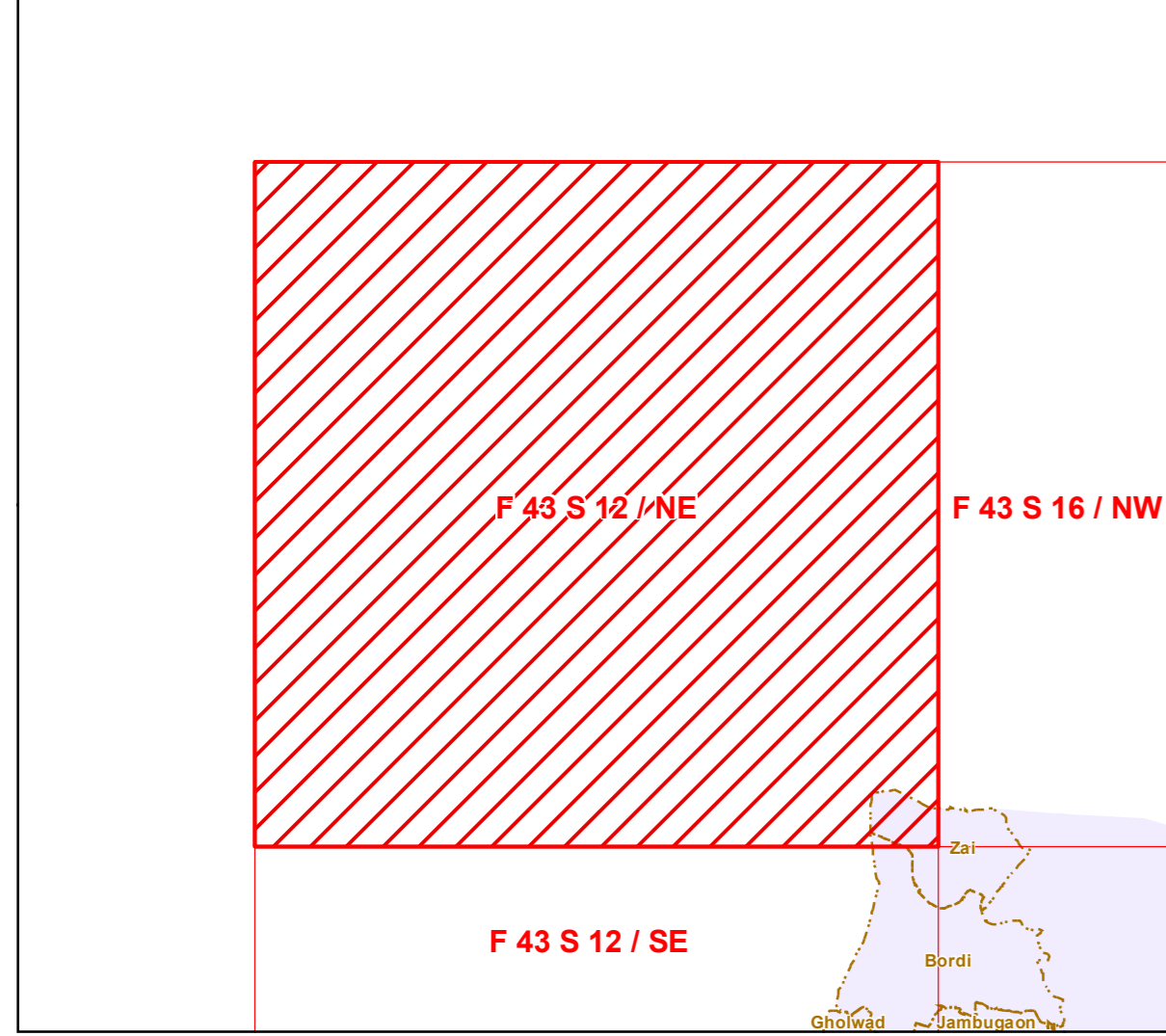
Map No: MH 100



- Legend**
Data Provided: MCZMA
- Road
 - Bridge
 - Ferry
 - Railway Line
 - Sluice
 - Ward Boundary
 - Municipal or Corporation Boundary
 - Taluk Boundary
 - Village Boundary
 - Survey Plots
- Data Source: NCSCM*
- ⚓ Lighthouse
 - Bund
 - Seawall
 - Jetty or Breakwater
 - High Tide Line
 - Low Tide Line
 - ▨ CVCA
- CRZ lines**
- CRZ line for River or Creek
 - 20m CRZ Line for Islands
 - 50m CRZ line for Bay
 - 50m CRZ Line - CRZ IIIA (NDZ)
 - 200m CRZ Line - CRZ IIIB (NDZ)
 - 500m CRZ line
 - Hazard Line - (Data Source: SOI)



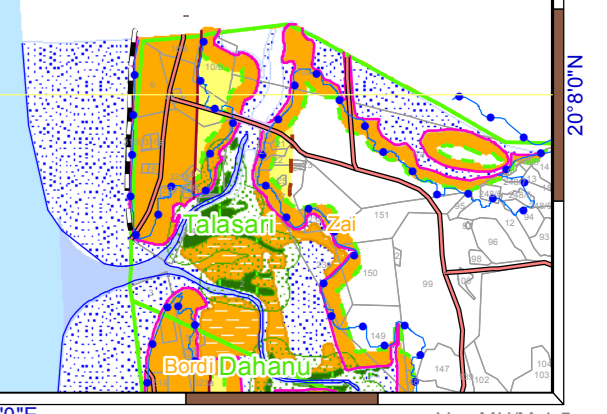
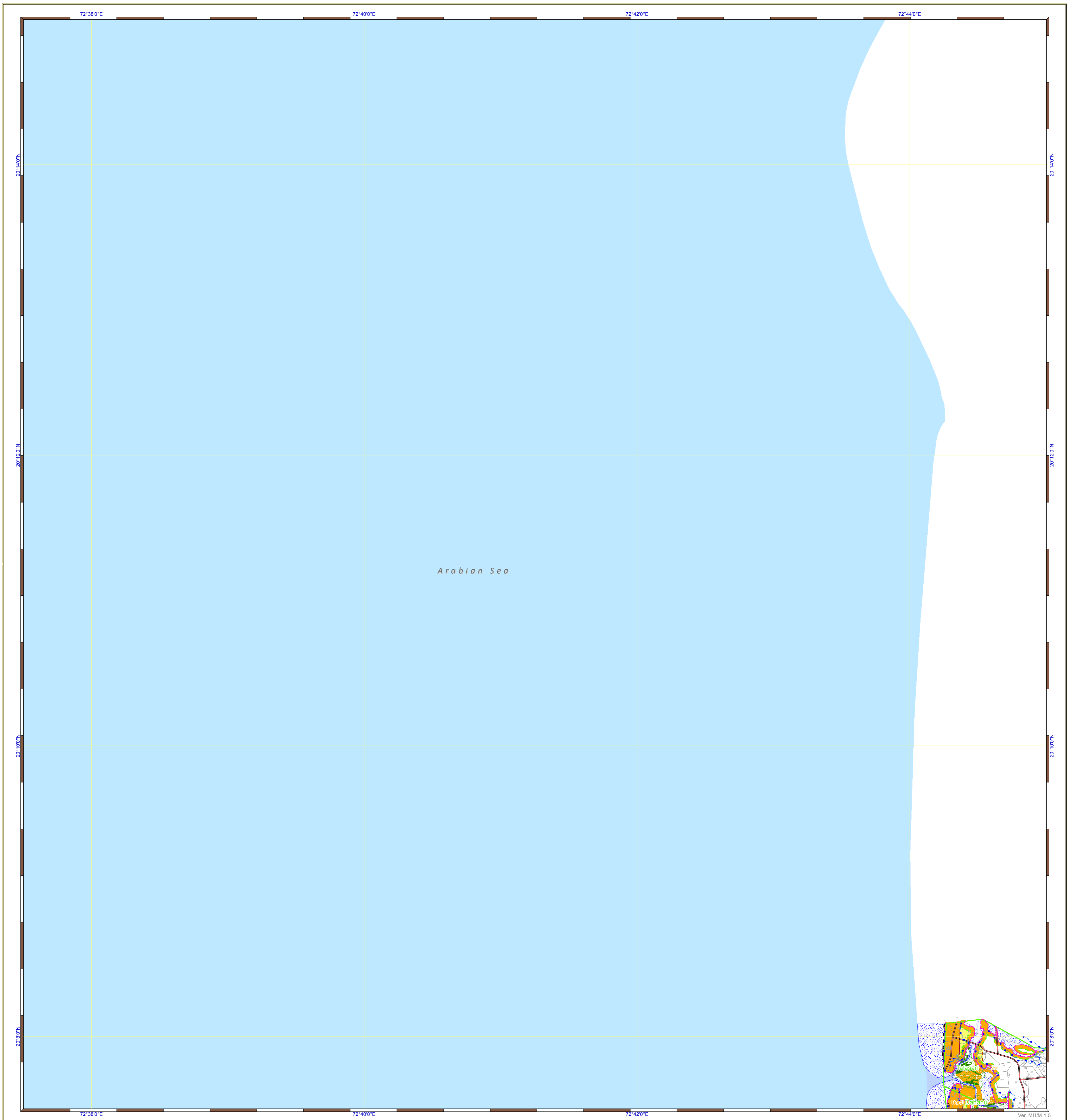
- CRZ CATEGORY**
- CRZ - I**
- ▨ Nesting Grounds of Birds - CRZ IA
 - ▨ Turtle Nesting Grounds - CRZ IA
 - ▨ 50m Mangrove Buffer Zone - CRZ IA
 - ▨ Marine Protected Area - CRZ IA
 - ▨ Archaeological & Heritage Sites - CRZ IA
 - ▨ Corals and Coral Reefs - CRZ IA
 - ▨ Reserve Forests - CRZ IA
 - ▨ Salt Marsh - CRZ IA
 - ▨ Sand Dunes - CRZ IA
 - ▨ Mangroves - CRZ IA
 - ▨ Mudflats - CRZ IA
 - ▨ Beach - CRZ IB
 - ▨ Rock Outcrop - CRZ IB
 - ▨ Intertidal Zone - CRZ IB
- CRZ - II**
- ▨ CRZ landward of HTL - CRZ II
- CRZ - III**
- ▨ 50 to 500m from HTL - CRZ IIIA
 - ▨ 200 to 500m from HTL - CRZ IIIB
 - ▨ No Development Zone - NDZ
 - ▨ NDZ - Within CRZ II - Greater Mumbai
 - ▨ NDZ - Within CRZ II - Greater Mumbai
- CRZ - IV**
- ▨ Waterbody - CRZ IVA
 - ▨ Waterbody - CRZ IVB



- CRZ - IV**
- ▨ Waterbody - CRZ IVA
 - ▨ Waterbody - CRZ IVB

Prepared by
NCSCM
National Centre for Sustainable Coastal Management
(Ministry of Environment, Forest & Climate Change)
Chennai - 25

Prepared for
MAHARASHTRA STATE COASTAL ZONE MANAGEMENT AUTHORITY



Note:
1) If the CRZ III areas marked in the draft CZMP Maps (except Greater Mumbai) are falling within Municipal/Corporations areas then the areas will be reclassified into CRZ II during finalisations of CZMPs.
2) 50 m Mangrove Buffer Zone is provided for both Govt. Land and Private land.